

D) Specifications:

Model no.	LP-D820	LP-DB820-SY	LP-DB820-AB	LP-D820CT	LP-DB820CT-SY	LP-DB820CT-AB
No. of LED bulbs	820pcs					
Power	52w					
Color Temperature	5500K-6000K			3000K-7000K(Adjustable)		
Voltage	AC Adapter (15V 5A)					
LUX	0.5M(19000)/1M(6300)/2M(1700)					
Lamp holder	U-Bracket					
Dimensions (L X W X H)	46 x 24 x 8cm					
Size of Color filter	45.5 x 24cm					
Battery holder	NO	YES		NO	YES	
LCD display	NO			YES		
Weight	2.26kg	2.36kg	2.35kg	2.48kg	2.58kg	2.57kg
Accessories Included	AC Adapter (15V 5A) , Color filters (Transparent & Orange)			AC Adapter (15V 5A) , Color filter (Transparent)		

E) Attention



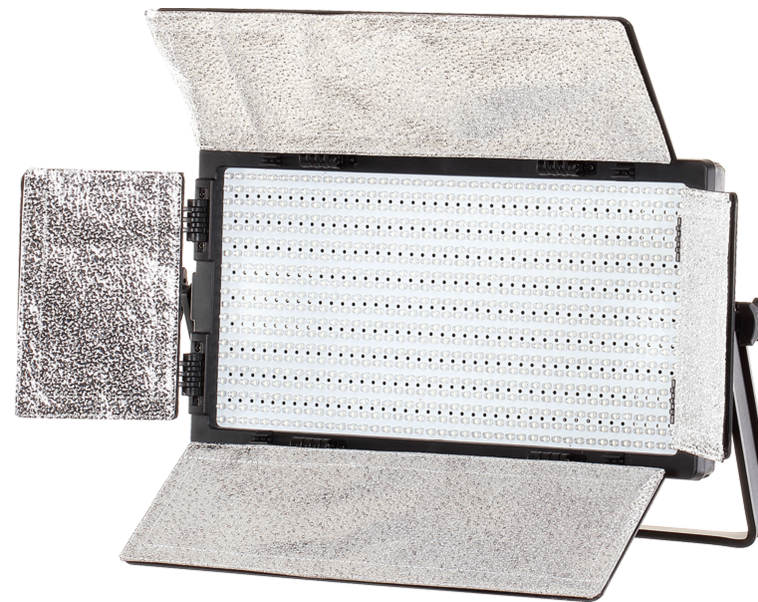
1. Make sure the power is off after use.
2. Do NOT plug/unplug when the power is still connected.
3. Since there can be high voltage inside the unit, Do NOT open or repair the unit yourself. If there is any defect, please contact an experienced technician.
4. Keep the environment dry and ventilated when using the product. Do not leave or use the flash in humid or dusty environment.
5. For best performance of LEDs, maintain cleanliness of LEDs by wiping the surface softly with clean cloth.
6. Do NOT apply pressure to the product.
7. Only use the specific Li-ion camcorder batteries according to the model of the battery holder on the rear panel
8. Read this manual carefully before using the product.



LP-D820 LP-DB820-SY/AB LP-D820CT

LP-DB820CT-SY/AB

LED Panel Instruction Manual



Thank you for purchasing FalconEyes' products.

**For further details of our related products, please contact your local distributor or visit our webpage at www.falconeyes.com.hk
Thank you.**

Please read this manual carefully before using this product.

A) Product Overview

LP- D series LED panel comes with 820pcs LED bulbs and a dimmer function. The LEDs used are flicker-free and produce stable color temperature. The LED panel is highly luminous, heat-free, energy efficient and extraordinarily durable.

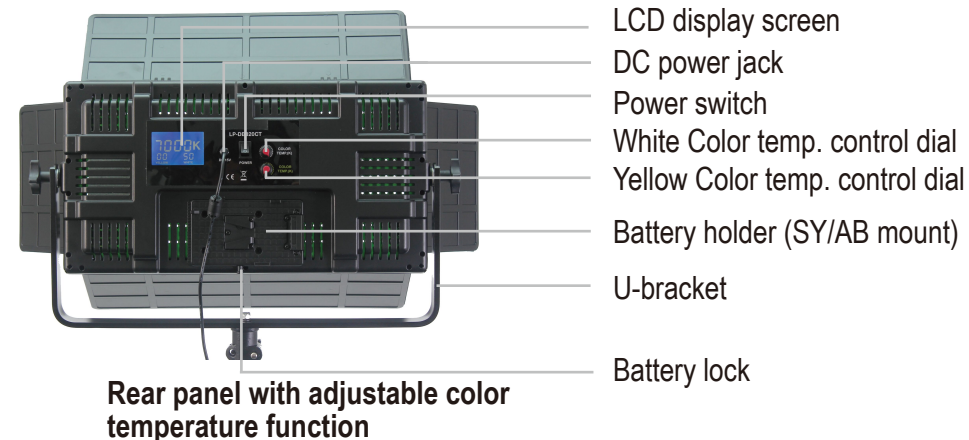
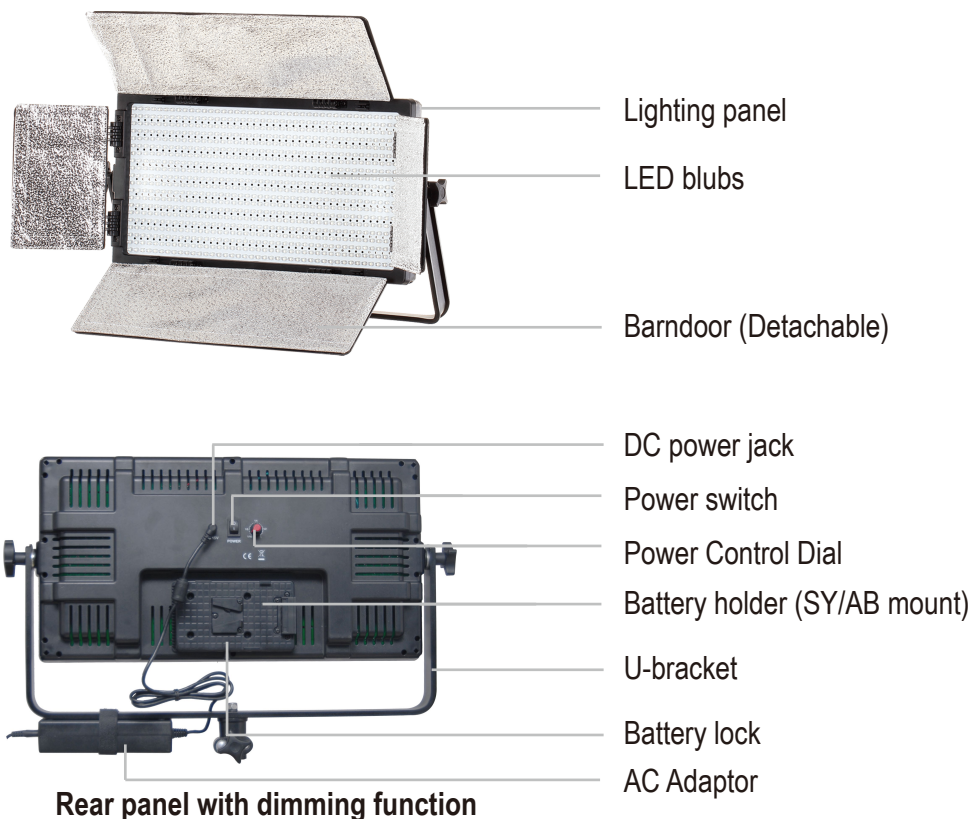
LP-DB Series LED lighting has a modern appearance and a stable internal circuit. It can be operated with both AC and DC power (Compatible with Sony or Anton Bauer camcorder battery) which is convenient for outdoor photography.

The light panel is lightweight, heat-resistant, durable and reliable as a special engineering plastic is used. Made of shining reflective materials, the detachable barndoor is a great help in controlling the direction and spread of light.

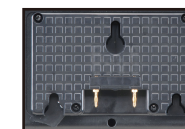
Adjustable color temperature (3000K-7000K)

The color temperature adjustment function of LP-CT series shows changing of color temperature clearly and allows easy operation for users.

B) Panel Diagram



Sony battery holder (SY)



Anton Bauer battery holder(AB)

C) Operating Instructions

LED Lighting with dimmer:

1. Please ensure the power is switched off before plugging the power cable into the socket ("0"=OFF, "1"=ON)
2. Power can be adjusted by the power control dial.

LED lights with adjustable color temperature:

1. Please ensure the power is switched off before plugging the power cable into the socket ("0"=OFF, "1"=ON)
2. Color temperature can be adjusted from 3000K to 7000K and the current value will be shown on the LCD display screen.
3. To create warmest color temperature, turn the white color temp dial to its left end and the yellow dial to its right end. The LCD then shows "3000K".
4. To create coolest color temperature, turn the yellow color temp dial to its left end and the white dial to its right end. The LCD then shows "7000K".
5. To create day light color temperature, turn both dials to their right ends. The color temperature reaches 5000K.

Battery installation:

Install the battery onto the holder directly. Uninstall the battery by pressing the battery lock after use.