

Installation for the main lamp



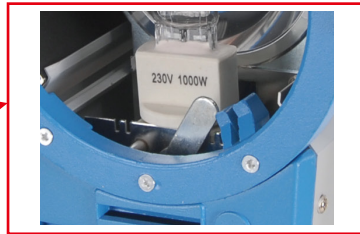
Fig.1



Fig.2



Fig.3



Enlarge figure

Fig.1 . Hold the spotlight side button, open the lamp holder.

Fig. 2. pull the lock lever to the left when installing the lamp bulb, wear gloves or use cloth to wrap the bulb, then gently inserted the bulb into the lamp holder. Make sure the bulb is correctly installed in place.

Fig. 3. pull the lock lever back to the right position after the installation is complete.

E) Attention

1. Use a good grounding power.
2. Do not operate the light in moisturize, and extreme weather circumstances.
3. When operating under low temperature circumstances, please set to low power to preheat for about 30 seconds, to prevent rupture of the Fresnel lens.
4. Please disconnect the power after use; the lamps should be placed in a dry place when not being used.
5. Do not dismantle the light by the non-professional.
6. Do not touch or look at the lamp bulb directly.
7. When the light is defective, please repair only by the technicians.

QH-series quartz light



Instruction Manual

A) Product Feature:

The QH series quartz light is extensively used for studio news, and stage film lighting. QH housing is made of high-quality aluminum; with special optical designs make it light weight and small size, illuminating soft light, evenly distributed light spots with various adjustment ranges to enhance flexibility. QH series can also be used in effects shootings as a special light source, as well as spot light to the

B) Technical Data

Model No.	Power (W)	Voltage (V)	Lens Filter Dia. (mm)	lamp Socket Type	Color Temp. (K)
QH-300	300w	AC110-230V /50Hz	80mm	GY9.5	3200k
QH-650	650w		110mm		
QH-1000	1000w		130mm	G22	
QH-2000	2000w		175mm	G38	

C) How to Use

1. Install spotlight in a light stand or ceiling track, expand the barn door.
2. Adjust the knob of the U-shaped bracket in order to adjust the illumination angle.
3. Turn on the power, fine-tune the power dimmer, and set to a corresponding desired brightness, ready to film.
4. Avoid strong vibration when the light bulb is operating, otherwise it will damage the light bulb.

D) nstallation

Installation for U-shaped bracket.



Fig. 1



Fig. 2

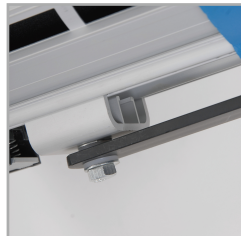


Fig. 3



Fig. 4

Fig. 1. as shown with a good stent

Fig. 2. as shown in a square plate into the slot aligned holes

Fig. 3. tighten the U-shaped bracket to the aligned holes (same on the other side).

Fig. 4. as shown the installation is completed

Installation for the Barn door

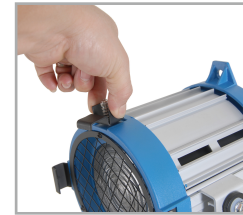


Fig.1

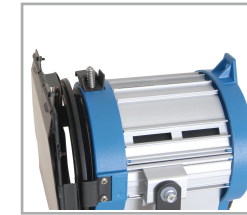


Fig.2



Fig.3

Fig.1. Rotating the barn door knob to the left or right direction by loosening it.

Fig. 2. Install barn door from top to bottom into the slot.

Fig. 3. Rotate the barn door knob to its reverse direction in order to tighten it.

Installation for the modeling lamp



Fig.1

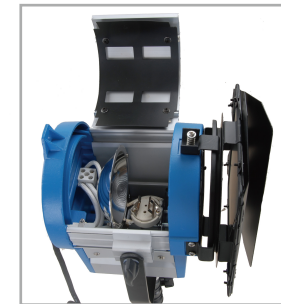


Fig.2



Fig.3

Fig.1. Install the spotlights on the light stand to make it steady, hold and open the top cover.

Fig. 2. Open the top cover to install or replace the lamp.

Fig. 3. Wear gloves or use cloth to wrap the bulb, then gently inserted the bulb into the lamp holder. Make sure the bulb is correctly installed in place.