

D) 技术参数 Specifications:

型号 Model no.:	LP-820TD-SY/AB
LED个数 No. of LED bulbs	820pcs
功率 Power	52w
色温 Color Temperature	3000K-8000K (可调色温 Adjustable)
流明 LUX (LUX)	0.5M(19000)/1M(6300)/2M(1700)
电压 Voltage	15V/5A
适配器 AC Adaptor	SP-AC15(15V/5A)
支撑座 Lamp Base	U型支架U-Bracket
尺寸 Dimensions (LxWxH)	53x 36 x 8cm
电池座 Battery Holder	√
色片大小 Size of Color Filter	42x22cm
色片 Color Filter	磨砂透明和橙色 Transparent & Orange
显示屏 LCD Display	√
重量 Weight	2.4kg
选购配件 Optional Accessories	锂电池 LI - ION Batter

E) 使用注意事项 Attention ⚠

1. 请勿带电插拔: (不使用时应断开电源, 即插入或拔出连接时应先 把电源开关关掉)
 2. 非专业人士, 请勿随便拆卸, 否则后果自负。
 3. 使用环境应保持干燥、通风注意防潮防水。
 4. 产品表面有轻微的油渍及污渍请使用清洁布擦拭表面即可清除。
 5. 请避免硬物将其划伤以至影响使用效果。
 6. 凡是购买本产品的买家请根据灯背后电池座配用电池。
 7. 使用产品时, 请详细阅读说明书。
1. Make sure the power is off after use.
 2. Do NOT plug/unplug when the power is still connected.
 3. Since there can be high voltage inside the unit, Do NOT open or repair the unit yourself. If there is any defect, please contact an experienced technician.
 4. Keep the environment dry and ventilated when using the product. Do not leave or use the flash in humid or dusty environment.
 5. For best performance of LEDs, maintain cleanliness of LEDs by wiping the surface softly with clean cloth.
 6. Do NOT apply pressure to the product.
 7. Only use the specific Li-ion camcorder batteries according to the model of the battery holder on the rear panel
 8. Read this manual carefully before using the product.



LP-820TD LED灯说明书 LED Panel Instruction Manual



感谢您选购锐鹰公司的产品!

如欲了解更多相关产品的信息, 请联系您当地的经销商或访问我们的网页。使用产品之前, 请先仔细阅读说明书。

Thank you for purchasing FalconEyes' products.

For further details of our related products, please contact your local distributor or visit our webpage at www.falconeyes.com.hk

Thank you.

Please read this manual carefully before using this product.

E-mail: info@falconeyes.com.hk

Website: www.falconeyes.com.hk

A) 产品概述 Product Overview

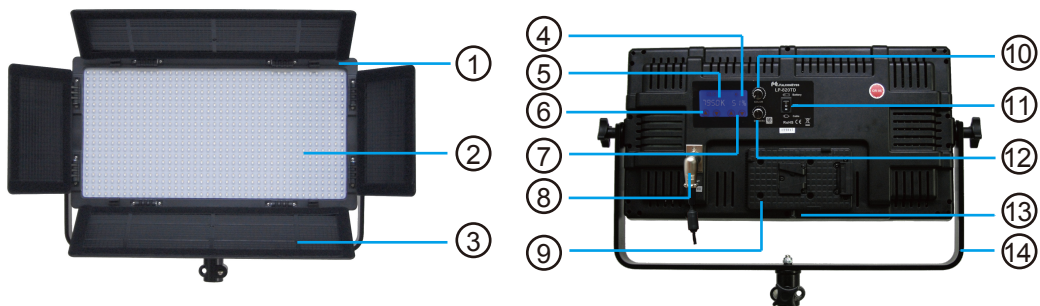
LP-820TD LED灯是锐鹰公司最近研发的具有发光效率高，功率小，重量轻，适合大型的影楼用光和大型的公共照明体系；灯体外观新颖，采用工程塑料制成，轻便耐用，安全可靠；灯的内部设计电路结构安全稳定，采用DC供电，同时可选配松下，索尼电池座，方便简单；灯珠是采用了拥有亮度高色温稳定、节能及寿命长等优点，真是现代摄影的首选。

LP-820TD LED灯可调色温(3000K-8000K)，根据客户需要可调不同色温，并具有液晶显示屏其功率和色温的功能。

LP-820TD are recently developed high luminous, effective and light LED lights, which are suitable for large-scale studio and public lighting system. The light body is made by light durable, safe and reliable engineering plastic. Users can choose Sony V-mount battery or Anton Bauer battery base as DC power supply. Stable, energy saving and long lifespan LED lights are adopted.

The light has an adjustable color temperature (3000K-8000K) and a LCD display showing current color temperature and power output for desirable setting.

B) 功能示意图 Panel Diagram



1.灯体 Lighting panel

2.LED灯泡 LED blubs

3.挡光板 Detachable barndoor

4.亮度显示Output Display

5.色温显示 Color temperature display

6.色温调节Color Temperature adjustment

7.亮度调节Brightness adjustment

8.DC电源插孔 DC power jack

9.电池座 Battery holder (SY/AB mount)

10.色温调节旋钮Color temperature adjustment knob

11.电源开关 Power switch

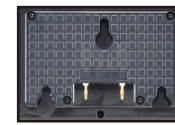
12.亮度调节旋钮Brightness adjustment knob

13.电池锁钮 Battery lock

14.U型支架 U-bracket



索尼电池座 (SY)
Sony battery holder (SY)



松下电池座(AB)
Anton Bauer battery holder(AB)

C) 操作说明 Operating Instructions

LP-820TD

1、插入电源线之前，请检查电源开关是否在关闭状态（电源开关为2档，向上拨，使用电池供电，向下拨使用适配器供电，具体查看图1）。
Before connecting the power cable, please check if the switch is in "OFF" state (2 power sources can be chosen, switch to use battery (up) or adaptor (down). Please refer to fig. 1)



图1、开关视图

2、插入电源线，打开电源开关后用户可根据所需调节灯光的亮度与色温，该灯有两种调节方式。
①可以直接用手指触动屏幕进行调节旋钮，色温显示下面的两个触摸点为色温调节，亮度显示下面的两个触摸点为亮度调节。
②调节时用户可转动调光旋钮进行调节，上边旋钮为色温调节旋钮，下边旋钮为亮度旋钮与休眠功能，（直接按下旋钮开始休眠，再按一次即是取消休眠具体请查看图2、图3）。
③转动调光旋钮时请匀速调节，过快调节，数据跳动跟不上。

2. Connect the power cable and switch on the light, users can adjust the color temperature and brightness in 2 ways:

① by pressing the touch points on the LCD display. They represent color temperature and brightness respectively.
② by turning the knobs on the control panel. Color temperature is controlled by upper turning knob; Brightness and power-save mode are controlled by lower turning knob (pressing the lower turning knob to enter or exit power-save mode, fig.2 ad fig.3).
③: Do not turn the knobs too quickly to prevent signal loss



图2、工作中



图3、休眠中

3、色温可调解范围为3000K-8000K,亮度可调节范围为0-100。当色温调节到5500K，亮度调到100时为最亮。

The color temperature range is 3000K – 8000K and the power output is from 0 – 100. It reaches maximum power output in 5500K and 100%.

电池安装 Battery installation:

安装电池时直接安装无须按住按钮，退出电池时请按住电池座锁钮可将电池退出。

Install the battery onto the holder directly. Uninstall the battery by pressing the battery lock after use.