

D) 技术参数 Specifications:

型号Model no.:	LP-4485TD-SY/AB
LED个数 No. of LED bulbs	448pcs
功率 Power	224w
色温 Color Temperature	3000K-8000K (可调色温 Adjustable)
流明 LUX (LUX)	0.5M(130000) / 1M(67000) / 2M(19000)
电压 Voltage	15V/10A x 2
适配器 AC Adaptor	SP-AC15(15V/10A) x 2
支撑座 Lamp Base	SPR-200B
尺寸 Dimensions (LxWxH)	118.5 x 23 x 10cm
电池座 Battery Holder	√
显示屏 LCD Display	√
重量 Weight	7.1 kg
选购配件Optional Accessories	锂电池 LI - ION Batter

以上LUX数据测量均使用ISO: 640感光度测量 The above LUX figure is recorded under ISO:640

E) 使用注意事项 Attention ⚠

1. 请勿带电插拔: (不使用时应断开电源, 即插入或拔出连接时应先 把电源开关关掉)
2. 非专业人士, 请勿随便拆卸, 否则后果自负。
3. 使用环境应保持干燥、通风注意防潮防水。
4. 产品表面有轻微的油渍及污渍请使用清洁布擦拭表面即可清除。
5. 请避免硬物将其划伤以至影响使用效果。
6. 凡是购买本产品的买家请根据灯背后电池座配用电池。
7. 使用产品时, 请详细阅读说明书。
1. Make sure the power is off after use.
2. Do NOT plug/unplug when the power is still connected.
3. Since there can be high voltage inside the unit, Do NOT open or repair the unit yourself. If there is any defect, please contact an experienced technician.
4. Keep the environment dry and ventilated when using the product. Do not leave or use the flash in humid or dusty environment.
5. For best performance of LEDs, maintain cleanliness of LEDS by wiping the surface softly with clean cloth.
6. Do NOT apply pressure to the product.
7. Only use the specific Li-ion camcorder batteries according to the model of the battery holder on the rear panel
8. Read this manual carefully before using the product.



LP-4485TD LED灯说明书 LED Panel Instruction Manual



感谢您选购锐鹰公司的产品!

如欲了解更多相关产品的信息, 请联系您当地的经销商或访问我们的网页。使用产品之前, 请先仔细阅读说明书。

Thank you for purchasing FalconEyes' products.

For further details of our related products, please contact your local distributor or visit our webpage at www.falconeyes.com.hk

Thank you.

Please read this manual carefully before using this product.

E-mail: info@falconeyes.com.hk

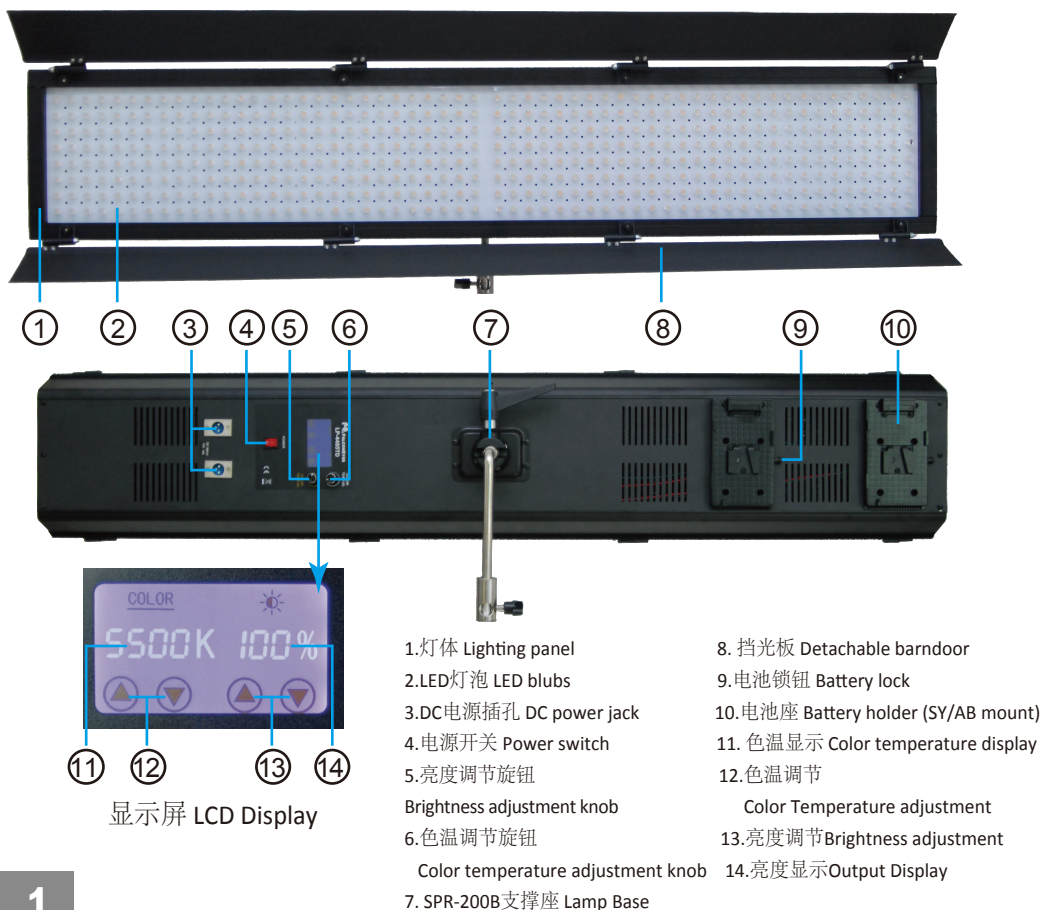
Website: www.falconeyes.com.hk

A) 产品概述 Product Overview

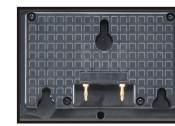
LP-4485TD是锐鹰最新研发的大功率LED灯，其最大输出功率达到224W，此灯可在交直流电源下使用，可以选配SY版（索尼V口）或AB版（松下口）锂电池接口，外拍工作时可直接使用锂电池续。可调色温的范围3000K~8000K无极调色温，独特的双液晶屏显示，双DC接口，双锂电池卡口，均为全国首创，并标配了便携式摄影包包。

LP-4485-TD-SY/AB is a large power LED panel which newly developed by Falcon Eyes Ltd. You can adjust color temperature from 3000K-8000K by touch screen. LP-4485TD-SY/AB can be operated by AC and DC power, the battery mount can chose to adaptable with camcorder battery SY (Sony V mount) or AB (Anton Bauer mount) which is quite convenient for applying to outdoor photography. The adjustable color temperature is from 3000K-8000K dimmable. The unique twin LCD display, double DC ports and double camcorder battery mounts are national initiative. A carrying bag is attached together with the LP-DB4485TD-SY/AB.

B) 功能示意图 Panel Diagram



索尼电池座 (SY)
Sony battery holder (SY)



松下电池座(AB)
Anton Bauer battery holder(AB)

C) 操作说明 Operating Instructions

LP-4485TD

- 1、插入电源之前，请检查电源开关是否关闭状态。（电源开关拨到0是关闭状态拨到1是已打开状态。）
1. Please ensure the power is switched off before plugging the power cable into the socket ("0"=OFF, "1"=ON)
- 2、插入电源线，打开电源开关后用户可根据所需调节灯光的亮度与色温，该灯有两种调节方式。
①可以直接用手指触动屏幕进行调节旋钮，色温显示下面的两个触摸点为色温调节，亮度显示下面的两个触摸点为亮度调节。
②调节时用户可扭动调光旋钮进行调节，上边旋钮为色温调节旋钮，下边旋钮为亮度旋钮与休眠功能，（直接按下旋钮开始休眠，再按一次即是取消休眠具体请查看图1、图2）。
③扭动调光旋钮时请均速调节，过快调节，数据跳动跟不上。
2. Connect the power cable and switch on the light, users can adjust the color temperature and brightness in 2 ways:
① by pressing the touch points on the LCD display. They represent color temperature and brightness respectively.
② by turning the knobs on the control panel. Color temperature is controlled by upper turning knob; Brightness and power-save mode are controlled by lower turning knob (pressing the lower turning knob to enter or exit power-save mode, fig.1 ad fig.2).
③: Do not turn the knobs too quickly to prevent signal loss



图1、工作中

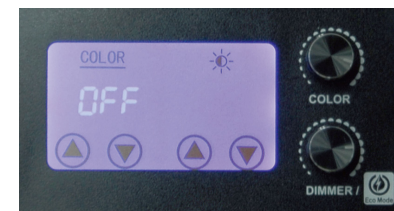


图2、休眠中

- 3、色温可调解范围为3000K-8000K,亮度可调节范围为0-100。当色温调节到5500K，亮度调到100时为最亮。

The color temperature range is 3000K – 8000K and the power output is from 0 – 100. It reaches maximum power output in 5500K and 100%.

电池安装 Battery installation:

安装电池时直接安装无须按住按钮，退出电池时请按住电池座锁钮可将电池退出。
Install the battery onto the holder directly. Uninstall the battery by pressing the battery lock after use.